

SMCS STAR BOARD



Principal's Message

TERM TWO, WEEK ONE

Kia Ora Koutou,

My partner has always sworn by diesel vehicles. The fuel has tended to be cheaper (even with road user charges), and he's loved the grunt. But I can tell you now – our next vehicle will be electric.

I share this because, like many of you, we're paying closer attention to fuel use and transport at the moment. Over recent days, schools have received guidance from the Ministry of Education about how we can prepare and respond during the current fuel situation, and part of that guidance is for us to share some key information with our community.

The Government has introduced a **National Fuel Plan**, which is available online here: [New Zealand's Fuel Response Plan \[PDF, 206 KB\]](#).

There are **four phases** in this plan. At present, New Zealand is at **Phase 1 – "Watchful"**. This means the fuel market is operating effectively, and fuel is available nationwide.

Across all phases of the plan, **onsite learning and student attendance remain our top priority**. At this stage, nothing has changed for our school, and your child should continue to attend school regularly, as usual.

In response to Phase 1, we are also beginning some small initiatives to support our community and reduce unnecessary travel. Things we could look at and perhaps things for you to consider are:

Encouraging carpooling where families are able, particularly for students travelling longer distances

Consolidating school trips and off-site activities to reduce unnecessary travel

Reviewing discretionary travel, including meetings and events that could be held onsite or online

Supporting active transport, such as walking and cycling, where it is safe and appropriate

Adjusting timing or grouping of activities to reduce multiple individual trips

We are also planning ahead for **Phase 2**, and we will keep you informed if anything needs to change for our school operations.

The **Ministry of Business, Innovation and Employment (MBIE)** is the lead agency for New Zealand's fuel response. More information is available here:

[Middle East conflict and New Zealand's fuel stocks – Ministry of Business, Innovation & Employment](#)

The **Ministry of Education** is supporting schools with their planning and has provided additional guidance here:

[About our fuel supply response – Ministry of Education](#)

As part of the wider Government response, schools are also encouraged to be prepared for **Phases 3 and 4** if required. We will continue to communicate with you regularly, including if there are any changes to the response phase.

Fuel and transport pressures

We know fuel and transport pressures will affect schools, families, and communities differently depending on location and circumstances. As a school, we are reviewing any activities that create travel and considering where we can reduce this and the associated costs, while still prioritising learning and wellbeing.

You may also be interested in the following Government announcement, which may support some families in our community:

- A **12-month relief package** for those receiving the **in-work tax credit**, worth up to **\$50 per week** for up to a year, or until the price of 91 fuel stays below \$3 for at least four weeks.

More information can be found here:

[\\$50 a week for lower income working families – Beehive](#)

As always, thank you for your ongoing support. We will continue to keep student learning, attendance, and wellbeing at the centre of all our planning and decision-making.

ANZAC Day

As we approach ANZAC Day, many schools like us have acknowledged in a way that is respectful, age-appropriate, and focused on understanding why the day matters for New Zealand.

At school, our focus will be on helping students understand:

- the purpose of ANZAC Day
- the importance of remembrance
- the values of service, resilience, and looking after one another

We marked ANZAC Day through a special ANZAC assembly, and our students will represent us at the varying services around the region

As with all aspects of school life, student care remains central, and participation will be supported in a way that is inclusive and appropriate for all learners.

Thank you for your continued support as we work through both current national considerations and our responsibilities as a school community.

Have a safe long weekend and be your best selves

Ngā mihi nui



Boarding

Kia Ora Koutou.

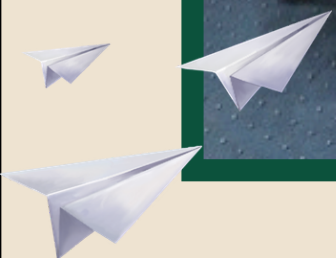
Despite the extreme weather this week, we have had an excellent start to the term in boarding.

On Sunday afternoon from 3pm there was a constant stream of returning boarders coming in the doors, and it was particularly nice to see four new faces join our boarding community. Our tradition of returning the night prior to the beginning of each term so boarders can set up their rooms, reconnect with their peers, and share a meal together before year level meetings, really sets the tone for boarding going forward. Thank you to those who were able to attend our parent/ caregiver meeting on Sunday. It is such a good way for families to connect and for everyone to be updated on what is happening in boarding.

Yesterday, those Year 7 and 8 boarders who were in the house spent time with boarding staff and HESSIE making paper planes and other flying objects. Again, it is lovely to see the girls interacting together.

A reminder it is an exeat this weekend with Anzac Day on Monday. Both boarding houses will close at 5pm tonight and will reopen on Monday at 6pm.

Enjoy the weekend and on Monday, let us remember all who have served.
Jo



Integrated Activity Schedule

Sport Schedule

Week2 - Term 2

Monday Apr 27th - Sunday May 3rd

	Monday	Tuesday	Wednesday	Thursday	Friday	Saturday	Sunday
Before School / All Day	ANZAC DAY						
During School		Primary Netball Kowhai Training 1.15-1.50pm @SMS	Netball Jnr Black Training 1.15-150pm @SMS				
After School	1st XI Football Training 4-6pm @ SMS	1st XI Football Training 3.30-5pm @ SMS Field Football Saints Training 3.30-4.30pm @ SMS Field	3.30-4.15pm NO DANCE TROUPE	Primary Football Ferns Game vs MIS Whero @ MIS 3.45pm Van Departs 3.20pm, Pick Up 5pm			
		Ct 9 SMS Kiwikiwi v MIS Pulse		Netball Jnr Pink Training 3.30-4.30pm @SMS Gym Netball Jnr Gold training 3.30-5pm @SMS Gym Netball Primary Kiwikiwiki training 3.45-4.45pm @SMS Outside Courts Netball Primary Kakariki Training 3.45-4.45pm @ SMS Outside Courts			
		Hockey 1st XI Training 6.30-8pm @ Clareville Turf Van departs 6.10pm, pick up 8pm					

Live Integrated Activity sheet - available on our website:
<https://www.stmatts.school.nz/parents/newsletters/>



ST MATTHEW'S COLLEGIATE DISCOUNT CODE:

WGJH30SMC

30% OFF

FULL PRICED HOCKEY STICKS*

*Applies to Gryphon, Ritual, Y1, Voodoo and Atlas branded sticks

**FOR USE ONLINE AT
WWW.JUSTHOCKEY.CO.NZ**

218 RIDDIFORD STREET, NEWTOWN
OPEN 10.30AM - 5.30PM MON-FRI
9AM - 3PM SAT & SUN

VALID UNTIL 31 MAY 2026. MVP POINTS WILL STILL ACCUMULATE WITH ANY PURCHASE. NOT VALID IN CONJUNCTION WITH ANY OTHER OFFER.



Workshop - Hadlow Ambrose Golf Tournament 2026

Masterton Golf Club Friday, 1st May 2026

On **Friday 1st May 2026**, Friends of Hadlow are running their annual corporate 'Golf Day'. This is Friends of Hadlow major annual fundraising event that raises over \$10,000 each year. All proceeds from the 'Workshop Hadlow Ambrose Golf Day' goes back to Hadlow School which directly benefits all our children.

The 'Workshop Hadlow Ambrose Golf Day' will be held at the Masterton Golf Club on the Lansdowne course.

Thank you to all our hole sponsors who are sponsoring a hole in 2026. We will have a full list of the sponsors in next week's Bulletin.

To those golfers in our school community, book yourself in for a wellbeing day on **Friday 1st May**. Further details about the 'Workshop Hadlow Ambrose Golf Tournament 2026', will be communicated over the coming months.

Email office@hadlow.school.nz to have an entry form emailed to you or pop into Hadlow School to collect an entry form.





Around School

Jorge Sandoval MNZM

I have been living in New Zealand since November 1976, spending most of my time in Wellington before moving to the Wairarapa 15 years ago. As the organizer of New Zealand's only international UCI stage race, I believe the Wairarapa offers some of the best roads in the country for hosting such an international event.

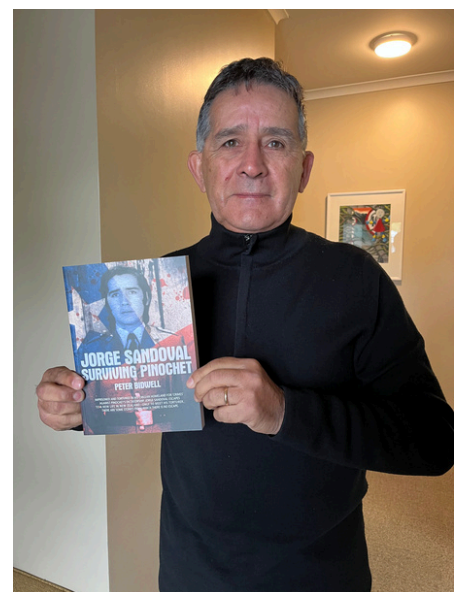
I currently live in Rangitumau with my wife, Glenys. I have two daughters, one son, and three grandchildren—none of whom have taken up cycling. My own background is deeply rooted in the sport. I was a competitive road cyclist and participated in overseas stage races both as a rider and later as a manager of New Zealand national teams. Today, I continue to race and ride my bike at least five days each week.

I own and operate my company, which delivers both international and national cycling events. Over the years, I have organised more than 30 elite UCI international cycling events, including two Women's World Cup races, along with many other national competitions.

My contributions to national and international cycling in New Zealand have been recognised through several honours, including being named in New Zealand's New Year Honours list. Receiving such recognition has been a tremendous honour and a privilege. This honour also reminded me of my early days in New Zealand. I arrived in this country as a political refugee—alone, without English, carrying only a couple of T-shirts and a few Spanish records. My journey reflects the quality and generosity of this country, which provides opportunities to all, whether you are born here or arrive as an immigrant. Today, it is a privilege to work for such a great and sporty college as St Matthew's. I truly appreciate the opportunity and am determined to give my very best.



Jorge Sandoval MNZM
Acting Director of Sport
St Matthew's Collegiate School
Email:
jorge.sandoval@trinityschools.nz
Phone: 027 767 7787





trinity Service



Karaitianatanga Ora / Christianity Alive

As we approach ANZAC Day, we pause to remember with gratitude and humility those who served and sacrificed for others. We honour their courage and reflect on the values of aroha, manaakitanga, and service – caring for one another and putting others before ourselves. In this, we see a reflection of Christ's love.

Jesus teaches us, "Greater love has no one than this: to lay down one's life for one's friends – Kahore he aroha o tetahi i rahi ake i tenei, ara kia tuku te tangata i a ia ano kia mate mo ona hoa." (John 15:13), reminding us of the depth of sacrificial love. On ANZAC Day, we also hold close the gift of rangimārie (peace), remembering Jesus' words: "Peace I leave with you; my peace I give you – He rangimarie taku e waiho nei ki a koutou, tenei taku rangimarie te hoatu nei e ahau ki a koutou: e kore e rite ki ta te ao hoatu taku hoatu ki a koutou. Kei pouri o koutou ngakau, kei matakū." (John 14:27).

As a school community, may we continue to learn from the past, give thanks for those who have gone before us, and walk forward in faith – living lives shaped by aroha, manaakitanga, and rangimārie in Christ.



Yr 11 Geography

The extreme natural event earlier in the week meant a postponement of our planned trip to Henley Lake to collect data for an internal assessment. Fortunately, Friday has been the perfect day to survey the users of the environment and collect photographic evidence of the environmental features. The girls spent a glorious morning stepping out of their respective comfort zones to meet with locals and observe interactions between people and place.





Acting Antics holiday production photos

Once again the Acting Antics team, led by Director Deborah Percy, put on a production this last holidays at St Matthews. "Rosie" was set in New York city in the 1920's. Out of a cast of 22, 12 were St Matthews and Hadlow students. See if you can guess who they are. Acting Antics will be back next holidays (July 14-17) with the sequel to "Rosie", "Mr. Pinstripe"!



Uniform shop hours for week 1 of term 2:

The St Matthew's shop will open as usual on the last afternoon of the school holidays, Sunday 19th April 2pm – 5pm.

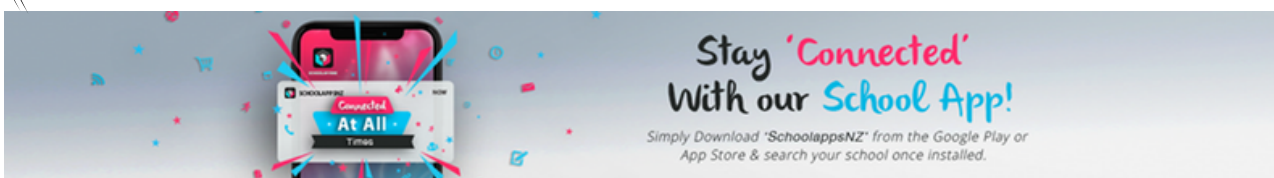
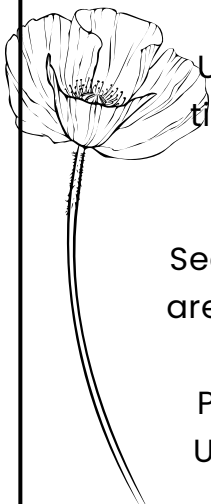
Extra openings in first week of term 2: After school on Monday 20th, Tuesday 21st & Wednesday 22nd April.

Usual shop hours during term time: Thursdays 1pm- 4pm during term time. If you would like to arrange an appointment outside these hours, please email Juliet Smith: smcsuniforms@trinityschools.nz or sm.uniforms@trinityschools.nz

Second hand winter sports uniforms (netball, hockey and some football) are available to buy at the St Matthew's shop. New hockey/football socks @\$24.00 are available at the St Matthew's shop and NZ Uniforms.

Payment in the shop at the time of sale by EFTPOS or credit card only.

Uniform information: <https://www.stmatts.school.nz/parents/uniform/>



Stay 'Connected'
With our School App!

Simply Download 'SchoolappsNZ' from the Google Play or App Store & search your school once installed.

SMOGA Grants Now Open!

The St Matthew's Old Girls' Association (SMOGA) is delighted to open applications for two exciting student opportunities

Outward Bound Grant – A \$2,500 grant (incl. GST) toward an 8-day or 21-day Teen Outward Bound course.
Apply here: <https://forms.gle/GWIRJ4qiwJ4tCboK7>

Spirit of Adventure Grant – A fully funded voyage aboard the Spirit of New Zealand.
Apply here: <https://forms.gle/xDER84v7JRyi2b9Y8>

These grants are open to current students in Years 11–13 who are either daughters, nieces, or granddaughters of SMOGA members, or who join SMOGA as part of the application process.

For full details, please visit: www.stmatts.school.nz/academic/scholarships/

St Matthew's Collegiate School



OPEN AFTERNOON

Thursday 7th May 2.00pm-5.00pm

Day & Boarding School for Girls Years 7-13



www.stmatts.school.nz

Key Dates:

Monday 27 April - ANZAC Day Obs.
Thursday 30 April - Yr9 Science trip to Pukaha
Saturday 2 May - Sunday 3 May - Silver & Gold DoE
Sunday 3 May - NISS Dressage
Monday 4 May - Prefects Parents Meeting
Tuesday 5 May - Scots College Secondary Winter Fixture @ Scots College
Wednesday 6 May - Tough Gal Challenge Yr10 PE
Thursday 7 May - Open Afternoon
Sunday 10 May - Cooper House Chapel

2026 Term Dates

Term One - Monday 2nd February to Thursday 2nd April
Term Two - Monday 20th April to Friday 3rd July
Term Three - Monday 20th July to Friday 25th September
Term Four - Monday 12th October to Saturday 5 December





What's on the menu this week?



Launch the Camera App and aim your camera at the QR Code to scan it.



RATHKEALE COLLEGE 1ST XI CRICKET PRESENTS:



CALLING ALL SHAZZA'S & DAZZA'S!

Grab your mullet, dress in black & join us for an unforgettable night of rocking out to great tunes, naughty number calls, air guitar solos and straight-up bogan hilarity.

FRIDAY 8 MAY

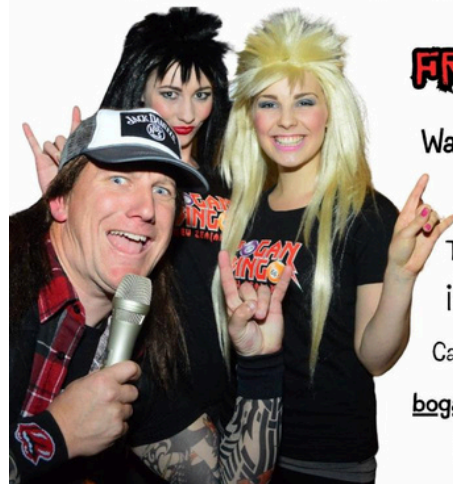
Wairarapa Events Centre,
Carterton
6pm-10pm

Tickets \$39 per person or
\$390 for a table of 10
Includes food and 4 bingo
cards per person.

Cash Bar & Eftpos available.

Secure your table at
boganbingofundraiser@gmail.com

Prizes for best dressed!



2026 GOLD SPONSORS



Stuff Wairarapa Times-Age

WAIRARAPA COLLEGE PRESENTS

Sister Act

A DIVINE MUSICAL COMEDY

MUSIC BY
ALAN MENKEN

LYRICS BY
GLENN SLATER

BOOK BY
SHERRI AND BILL
STEINKELLNER

TICKETS

\$27
ADULT

\$10
STUDENT

FOR ONLINE SALES
SCAN ME!



2026 SHOW DATES

THURSDAY 7TH MAY 7PM

FRIDAY 8TH MAY 7PM

SATURDAY 9TH MAY 1PM

SATURDAY 9TH MAY 7PM

SUNDAY 10TH MAY 1PM

OR VISIT
WAICOL.IBDN.NZ/ETICKETS

[In]Tuition

Online Tutoring

NCEA Science and Maths

NCEA Level 1 - 3

Passionate,
High-achieving
tutors

Biology

Chemistry

Physics

Engaging,
personalised
lessons!

Stats

Calculus

+ NZQA
Scholarship!

Learn more:

Find us online:

intuitiontutoringnz.com

or get in touch:

intuitiontutoringnz@gmail.com

